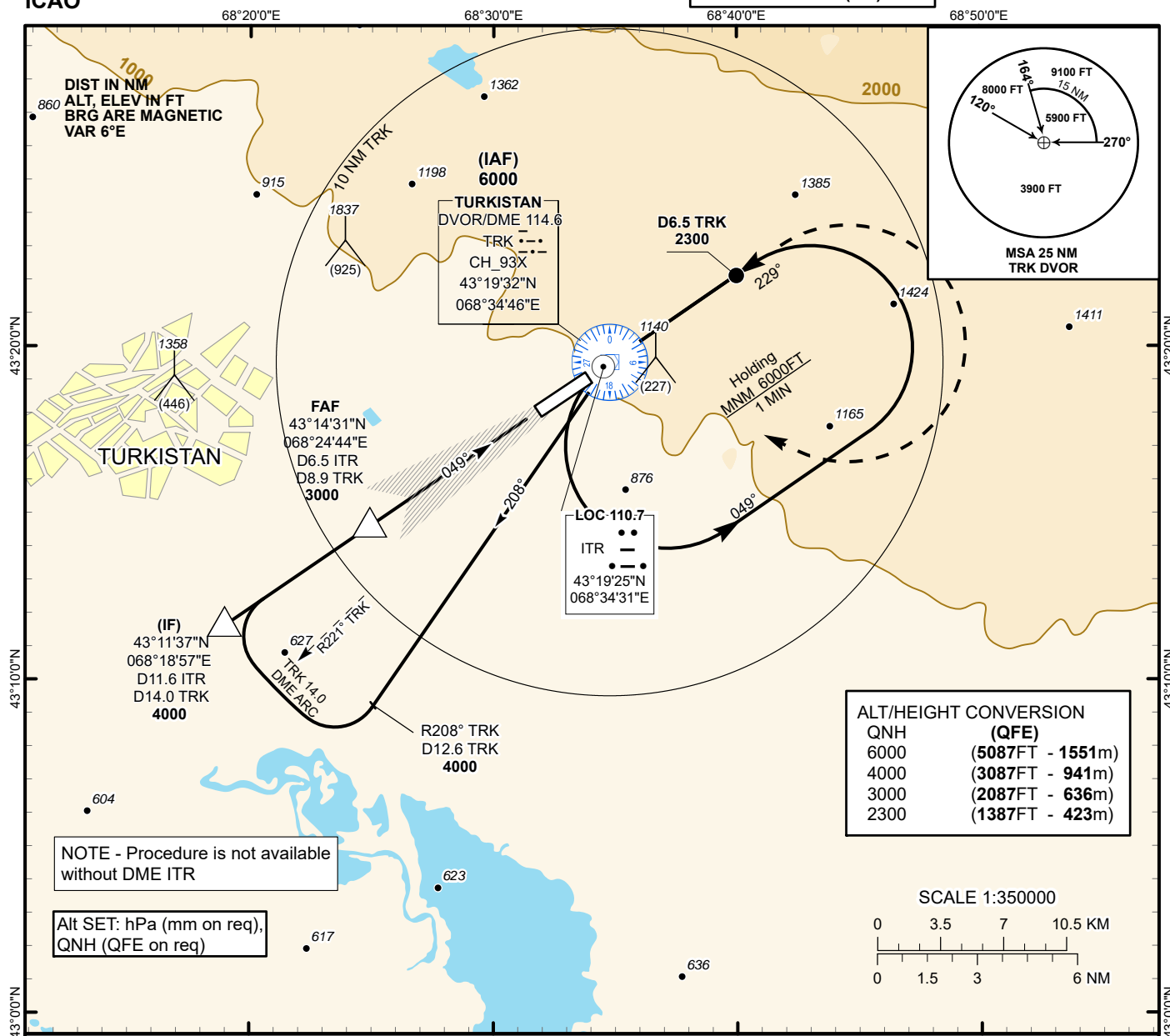


INSTRUMENT APPROACH
CHART
ICAO

AERODROME ELEV **989 FT**
HEIGHTS RELATED TO
THR RWY 05 ELEV **913 FT**

TURKISTAN TOWER 131.3
TURKISTAN ATIS (EN) 124.4
TURKISTAN ATIS (RU) 118.3

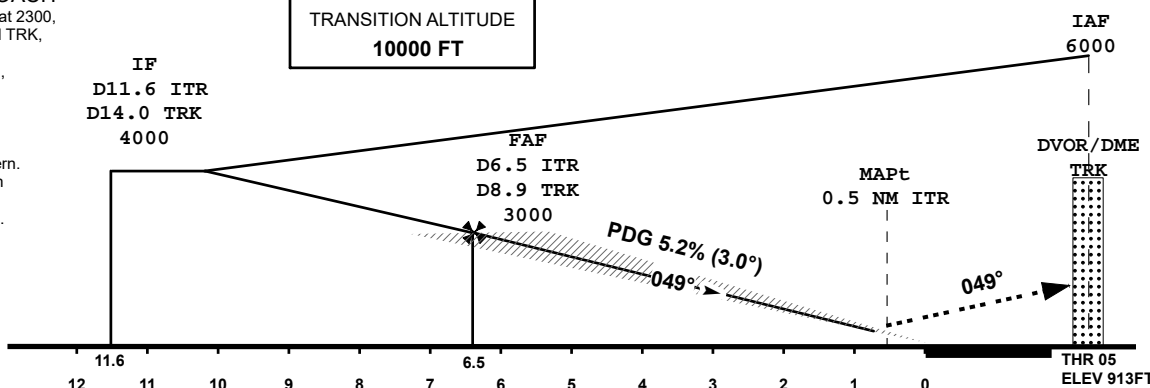
TURKISTAN
LOC/DME
RWY 05



MISSED APPROACH

Climb on track 049°, at 2300,
outbound to D6.5 NM TRK,
turn RIGHT to TRK.
Climb initially to 4000,
then as directed.
RADIO FAILURE:
In the case of RCF
climb to 6000 to TRK
and join holding pattern.
Missed approach turn
speed limited to
240 Kt IAS maximum.

TRANSITION ALTITUDE
10000 FT



CHANGE: Add ATIS, editorial.

Aircraft Category		A	B	C	D	DIST to THR DME ITR	NM	6.5	6.0	5.0	4.0	3.0	2.0	1.0
Straight-in Approach OCA/H						DME TRK	NM	8.9	8.4	7.4	6.4	5.4	4.4	3.4
	LLZ (GP INOP)	1180(270)				ALTITUDE	FT	3000	2872	2554	2236	1917	1599	1280
						HEIGHT	FT	2087	1959	1641	1323	1004	686	367
DME ITR ZERO RANGED TO THR RWY 05														
Aerodrome Operating Minima DH ft x RVR(CMV)	LLZ (GP INOP)													
						GS	Kt	80	100	120	140	160	180	
						Desc.Rate(5.2%)	ft/min	420	530	630	740	840	950	
						FAF-MAPt (6 NM)	min:sec	4:25	3:32	2:57	2:31	2:12	1:58	

TURKISTAN
LOC/DME

AERONAUTICAL DATA TABULATION

LOC/DME approach to RWY05 from TRK DVOR/DME	
Fix/point	Coordinates
TRK DVOR/DME	43° 19' 32.3"N 068° 34' 46.1"E
(IF) D11.6 ITR, D14.0 TRK	43° 11' 37.3"N 068° 18' 57.3"E
(FAF) D6.5 ITR, D8.9 TRK	43° 14' 31.2"N 068° 24' 43.7"E
THR RWY05	43° 18' 10.00"N 068° 32' 00.99"E
ITR LLZ	43° 19' 24.6"N 068° 34' 30.8"E
Final approach descent angle is 3°	